



MONTHLY MEMBERSHIP PROGRESS REPORT

District 322 E

Results as of: 05/31/2018

GMT: SWADESH RANJAN SAHA

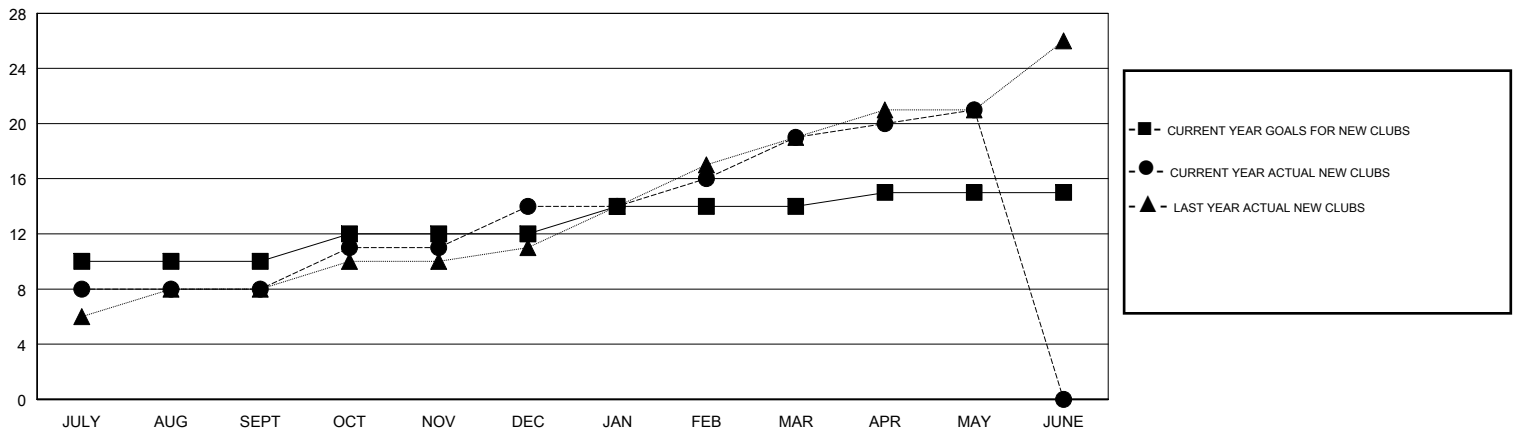
LOCATION INDIA

GMT CA

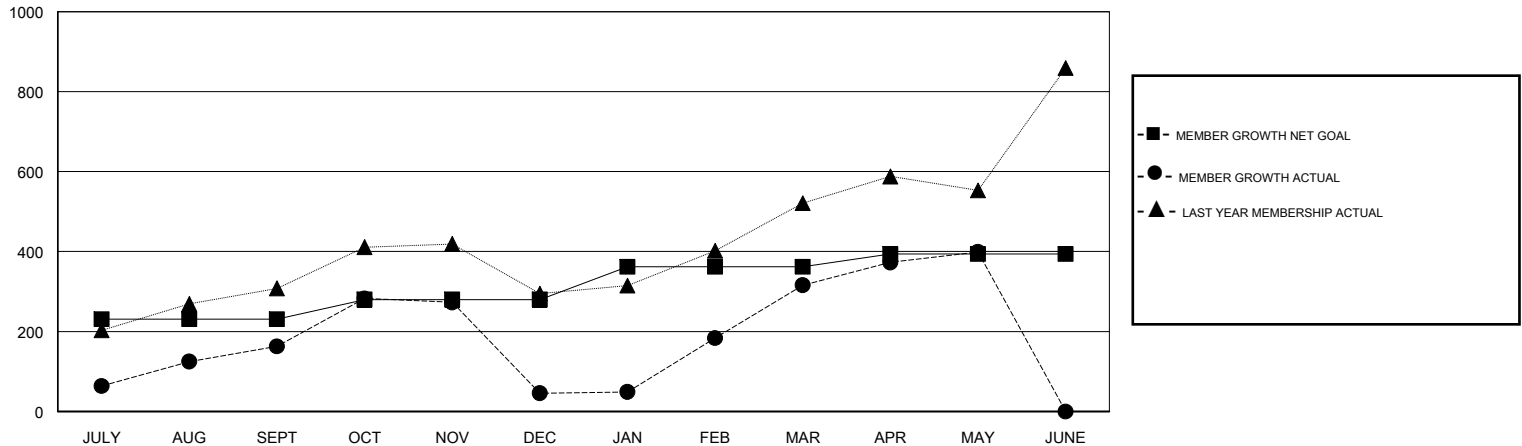
| Clubs | | | |
|-----------------------|---------------|-----------|---------------|
| RESULTS FOR 2017-2018 | | | |
| QUARTER | NEW CLUB GOAL | NEW CLUBS | DROPPED CLUBS |
| JULY/AUG/SEPT | 10 | 8 | 1 |
| OCT/NOV/DEC | 2 | 6 | 11 |
| JAN/FEB/MAR | 2 | 5 | 0 |
| APR/MAY/JUNE | 1 | 2 | 0 |

| Members | | | |
|-----------------------|------------------------|----------------------|--|
| RESULTS FOR 2017-2018 | | | |
| QUARTER | MEMBER GROWTH NET GOAL | MEMBER GROWTH ACTUAL | DROPPED MEMBERS ACTUAL (including transfers) |
| JULY/AUG/SEPT | 231 | 385 | 197 |
| OCT/NOV/DEC | 49 | 237 | 350 |
| JAN/FEB/MAR | 82 | 399 | 61 |
| APR/MAY/JUNE | 32 | 141 | 54 |

GOALS AND ACTUAL NEW CLUBS CUMULATIVE



GOALS AND ACTUAL MEMBERS CUMULATIVE



DROPPED CLUBS: 12

80 CLUBS OF 137 ADDED 1 OR MORE NEW MEMBERS

GENDER DISTRIBUTION

MALE 2,854 (67.58%)
 FEMALE 1,369 (32.42%)
 Women Percentage Fiscal Year Goal: 30%

DROPPED MEMBERS

| | |
|----------------|------------|
| DECEASED | 7 |
| CLUB CANCELLED | 301 |
| OTHER | 354 |
| TOTAL | 662 |

[CLICK HERE FOR CUMULATIVE MEMBERSHIP DATA](#)

| | |
|---------------------------------|-------|
| TOTAL FAMILY UNIT MEMBERS | 1,574 |
| FAMILY MEMBERS PAYING HALF DUES | 817 |